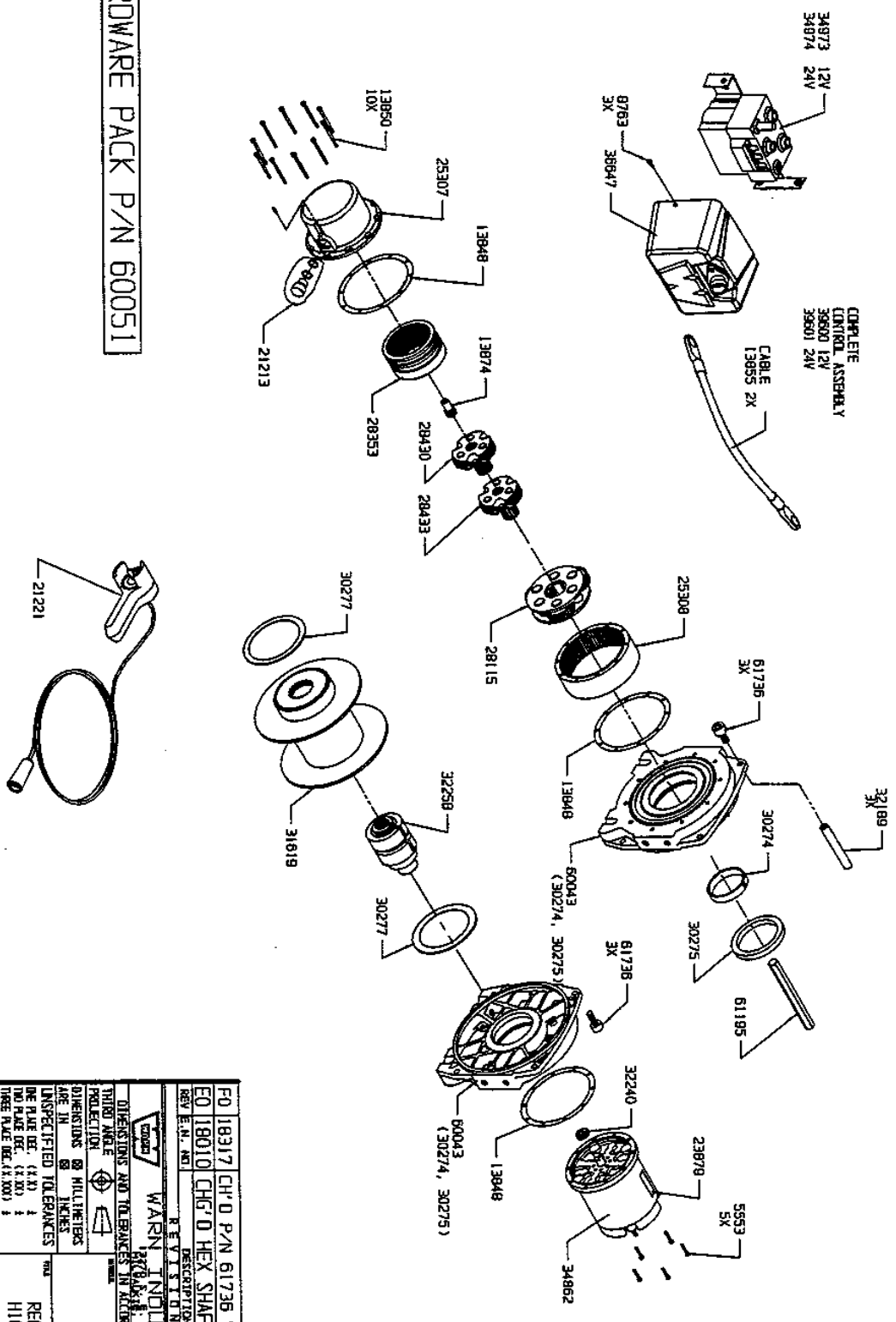


HARDWARE PACK P/N 60051



REV	DATE	BY	DESCRIPTION
EQ	18010	CHG'D	HEX SHAFT TO P/N 61195
FD	18917	CH'D	P/N 61736 WAS P/N 4504
<p>W.A. SHEET 1 OF 2</p>			
<p>33501</p>			
<p>REF DWG, DIMENSIONS H1600 ELECTRIC HOIST 12V</p>			
<p>RICH ZAHN 11/10/00</p>			
<p>33501</p>			

APR 0 1 2001

# PN 33501 33503 DC 1600 LF 12V

NOTE: WHEN ORDERING PLEASE GIVE WINCH MODEL & SERIAL NUMBER.  
Parts may be obtained through your local dealer or distributor

PART NO.	QTY.	DESCRIPTION
34862	1	ELECTRIC MOTOR, 12 VDC,
16118	1	MOTOR END CAP ASSY
32240	1	INPUT GEAR
5553	5	SOC HD CAPSCREW #10-24 X 3/4 " LONG
13848	2	GASKET
61736	6	SOC HD CAPSCREW #3/8-16 X1 " LONG
60043	1	DRUM SUPPORT ASSY
30277	2	THRUST WASHER, NYLATRON
32258	1	BRAKE ASSEMBLY,
31619	1	DRUM ASSEMBLY
61195	1	HEX SHAFT
32189	3	TIE ROD-
30275	2	SEAL, RADIAL OIL
30274	2	BUSHING, DRUM, NYLATRON
60043	1	DRUM SUPPORT, ( GEARTRAIN END )
25308	1	RING GEAR ( STAGE 3 )
28115	1	CARRIER ASSEMBLY ( STAGE 3 )
28443	1	CARRIER ASSEMBLY ( STAGE 2 )
28430	1	CARRIER ASSEMBLY ( STAGE 1 )
28353	1	CLUTCH RING GEAR
13874	1	SUN GEAR, INPUT
25307	1	GEAR HOUSING ASSEMBLY
13850	10	CAPSCREW, #10-24
21213	1	PLUG, CLUTCH BLOCK OUT ASSY
31654	1	LABEL, NAMEPLATE, 1600# HOIST
23879	1	LABEL, 12VDC
34973	1	CONTACTOR, 12V
39600	1	CONTROL PACK, 12V
36647	1	CONTROL PACK COVER
21221	1	REMOTE CONTROL
13855	2	CABLE, ELEC
31129	1	WEDGE, ROPE ANCHOR

APR 0 1 2001