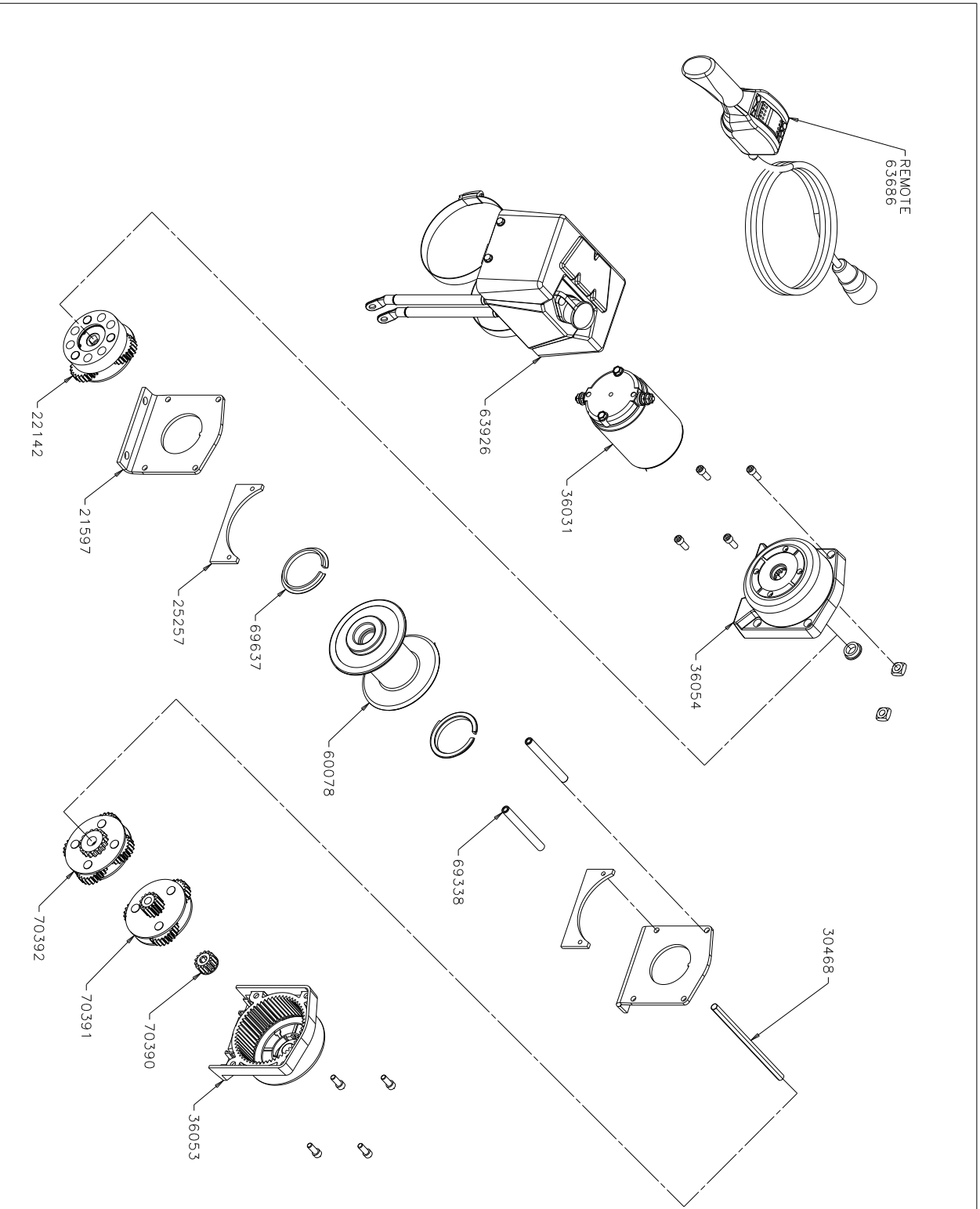


CONFIDENTIAL  
THIS DOCUMENT CONTAINS PROPRIETARY INFORMATION  
OF WARN INDUSTRIES. NEITHER THIS DOCUMENT,  
NOR THE INFORMATION IT CONTAINS, MAY BE USED,  
DISCLOSED TO OTHERS, OR COPIED, WHOLE OR IN PART,  
WITHOUT THE WRITTEN CONSENT OF WARN INDUSTRIES.



PART NUMBER	DESCRIPTION
21597	DRUM SUPPORT
22142	BRAKE ASSEMBLY
25257	WIRE ROPE PROTECTOR PLATE
30468	DRIVESHAFT
36031	ELECTRIC MOTOR 12V
36053	GEAR END HOUSING
36054	MOTOR END HOUSING
60078	DRUM
63680	REMOTE
63926	CONTROL PACK 150AMPS
69338	TIE ROD
69637	DRUM BUSHING
70390	SUN GEAR STG 2
70391	CARRIER ASSEMBLY STG 2
70392	CARRIER ASSEMBLY STG 3

1	5-23-08	INITIAL RELEASE	JAWD
REV	EN. NO.	REVISIONS	ISS
<b>WARN INDUSTRIES, INC.</b>			
A DIVISION OF WARN GROUP			
1000 WILSON AVENUE, SUITE 2000, CHICAGO, IL 60642			
TELEPHONE: (773) 399-2000 FAX: (773) 399-2001			
WWW.WARNINDUSTRIES.COM			
DIMENSIONS & TOLERANCES IN ACCORDANCE WITH ANSI/ASME Y14.5M-1994			
PROJECTION	<input checked="" type="checkbox"/> MILLIMETERS		
RADIUS	<input checked="" type="checkbox"/> MILLIMETERS		
ANGLE	<input checked="" type="checkbox"/> DEGREES		
UNSPECIFIED TOLERANCES:			
FINISH	AS MANUFACTURED		
FORM PLATE DEC. (X.X)	1		
FORM PLATE DEC. (X.XX)	1		
FORM PLATE DEC. (X.XXX)	1		
FORM PLATE DEC. (X.XXXX)	1		
FORM PLATE DEC. (X.XXXXX)	1		
FORM PLATE DEC. (X.XXXXXX)	1		
DC350 HOIST CE REMOTE SERVICE PARTS			
PN 66406			
5-23-08 SCOTT STUCKER			
986870			
SHEET 1 OF 1			