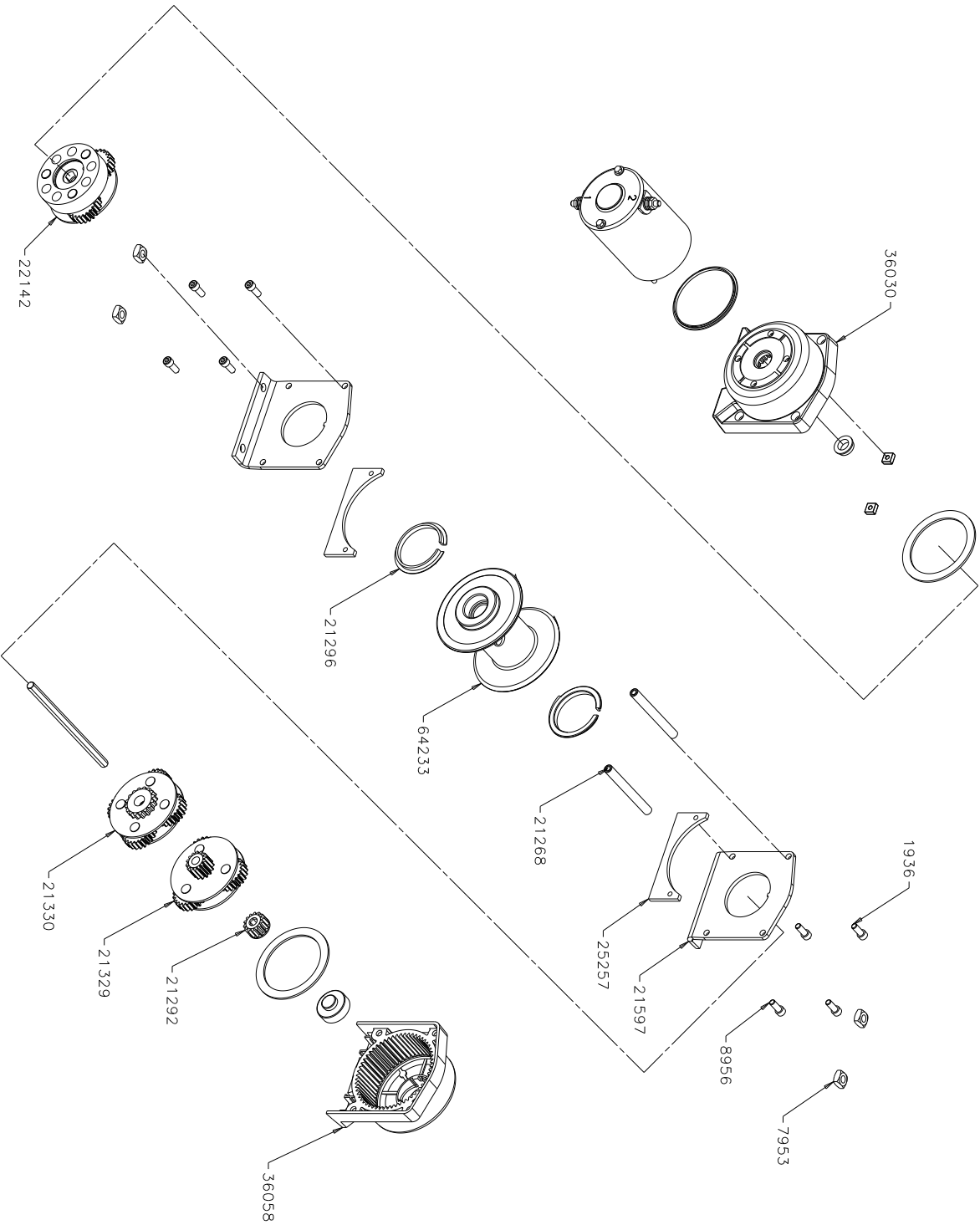


CONFIDENTIAL
 THIS DOCUMENT CONTAINS PROPRIETARY INFORMATION OF WARN INDUSTRIES. NEITHER THIS DOCUMENT, NOR THE INFORMATION IT CONTAINS, MAY BE USED, DISCLOSED TO OTHERS, OR COPIED, WHOLE OR IN PART, WITHOUT THE WRITTEN CONSENT OF WARN INDUSTRIES.



PART NUMBER	DESCRIPTION
1936	CAPSCREW 1/4-20X.63
7953	SQUARE NUT
8956	CAPSCREW 1/4-20X1/2
21268	TIE ROD
21292	SUN GEAR STG. 2
21296	DRUM BUSHING
21597	DRUM SUPPORT
21329	CARRIER ASSEMBLY STG. 2
21330	CARRIER ASSEMBLY STG. 3
22142	BRAKE ASSEMBLY
25257	WIRE ROPE PROTECTOR
36030	MOTOR END HOUSING
36058	GEAR END HOUSING
64233	DRUM

1	5-16-08	INITIAL RELEASE	JAWD
REV. E.N. NO.	REVISIONS		DATE
WARN INDUSTRIES, INC.			
12200 S. OLIVE ROAD MESA, ARIZONA 85204			
DIMENSIONS & TOLERANCES IN ACCORDANCE WITH ANSI/ASME Y14.5M-1994			
PROJECTION: FIRST ANGLE			
TYPICAL DIMENSIONS: MILLIMETERS			
UNSPECIFIED TOLERANCES:			
FRACTIONS: ± 0.005			
DECIMALS: ± 0.005			
HOLE PLACES: (A) ± 0.005			
TAP PLACES: (X) ± 0.005			
OTHER PLACES: (Z) ± 0.005			
DRAWN: JAWD			
CHECKED: JAWD			
DATE: 5-16-08			
BY: SCOTT STUCKER			
OVERSIC: D			
SHEET 1 OF 1			
DRAWING NO. 986868			